



(334031-H)

www.juravic.com.my

# JUARA PLC Training Kit

**Model : JTS S7-200/224**

**Features :**

*14 inputs (toggle switches)*

*10 outputs (indicator lamps)*

*External inputs and outputs can be connected for greater flexibility*

*8 Kbytes Program Memory (EEPROM) and 5 Kbytes Data Memory*

*Memory retention for dynamic data is approximately 190 hours with the built-in super capacitor extendable to 200 days with optional battery module*

*256 memory bits, counters and timers*

*2 time-controlled interrupts and 4 hardware interrupts*

*Programmable via RS-485 connection or with RS 232 using the provided PC/PPI cable*

*Supported protocols:  
-PPI and MPI slave  
-Freeport*

*2 Analog potentiometers*

*Built-in Real-time clock*

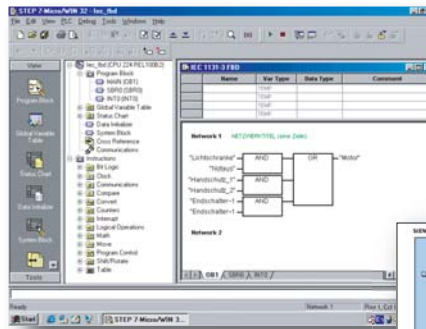
*Add up to 7 additional modules as your demands increase!*



The **JUARA** PLC Training Kit comes with the modular and compact Siemens SIMANTIC S7-200 CPU 224 PLC.

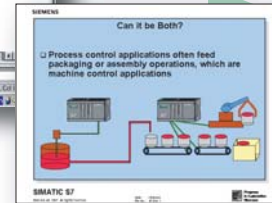
This training system is a complete all-in-one system with all needed inputs (toggle switches) and outputs (indicator lamps) already built-in.

The included Step 7-Micro/Win programming software offers powerful programming and debugging tools.



Included in this package is

- one PC/PPI cable
- full documentation
- training guides



Yes please,

- I would like to be contacted for more information.
- send me a CD catalogue of your product range.



Company : \_\_\_\_\_  
 Name : \_\_\_\_\_  
 Department : \_\_\_\_\_  
 Address : \_\_\_\_\_  
 City : \_\_\_\_\_  
 Phone : \_\_\_\_\_ (Office) \_\_\_\_\_ (Mobile)  
 E-mail : \_\_\_\_\_

**Juravic Engineering Sdn. Bhd.**

37-2, Jalan 5/91, Taman Shamelin Perkasa, 56100 Kuala Lumpur.

Tel : 603-92864773 (Hunting) Fax : 603-92864772 E-mail : jesb@juravic.com.my

(H-1E09E)

# Technical Specifications

Model	<b>JTS S7-200/224</b>
<b>Physical Size</b>	
Dimensions (WxHxD)	229 mm x 128 mm x 157 mm
Weight	Approx. 930 g
Power loss (dissipation)	Approx. 16.5W at full load (i.e. with additional loads connected)
<b>CPU Features</b>	
On-board digital inputs	14 inputs. (Additional connectors to external switches are provided. Built-in switches are toggle type.)
On-board digital outputs	10 outputs. (Indicator lamps)
High speed counters (32-bit value)	
Total	6 High-speed counters
Single Phase Counters	6, each at 30kHz max. clock rate
Two Phase Counters	4, each at 30kHz max. clock rate
Pulse outputs	2 at 20 kHz pulse rate
Analog adjustments	2 with 8-bit resolution
Timed interrupts	2 with 1 ms resolution
Edge interrupts	4 edge up and/or 4 edge down
Selectable input filter times	7 ranges from 0.2 ms to 12.8 ms
Pulse Catch	14 pulse catch inputs
Time of Day Clock (clock accuracy)	2 minutes per month at 25°C 7 minutes per month at 0°C to 55°C
Program size (stored permanently)	4096 words
Data block size (stored permanently) :	2560 words
Stored permanently	2560 words
Backed by super capacitor or battery	2560 words
Number of Expansion I/O modules	7 modules
Maximum digital I/O	256 points
Maximum analog I/O	32 inputs and 32 outputs
Internal memory bits	256 bits
Stored permanently on power down	112 bits
Backed by super capacitor or battery	256 bits
Timers total	256 timers
Backed by super capacitor or battery	64 timers
1 ms	4 timers
10 ms	16 timers
100 ms	236 timers
Counters total	256 counters
Backed by super capacitor or battery	256 counters
Boolean execution speed	0.37 $\mu$ s per instruction
Move Word execution speed	34 $\mu$ s per instruction
Timer/Counter execution speed	50 $\mu$ s to 64 $\mu$ s per instruction
Single precision math execution speed	46 $\mu$ s per instruction
Real math execution speed	100 $\mu$ s to 400 $\mu$ s per instruction
Super capacitor data retention time	190 hours, typical, 120 hours minimum at 40°C

\*Specifications may vary without prior notice